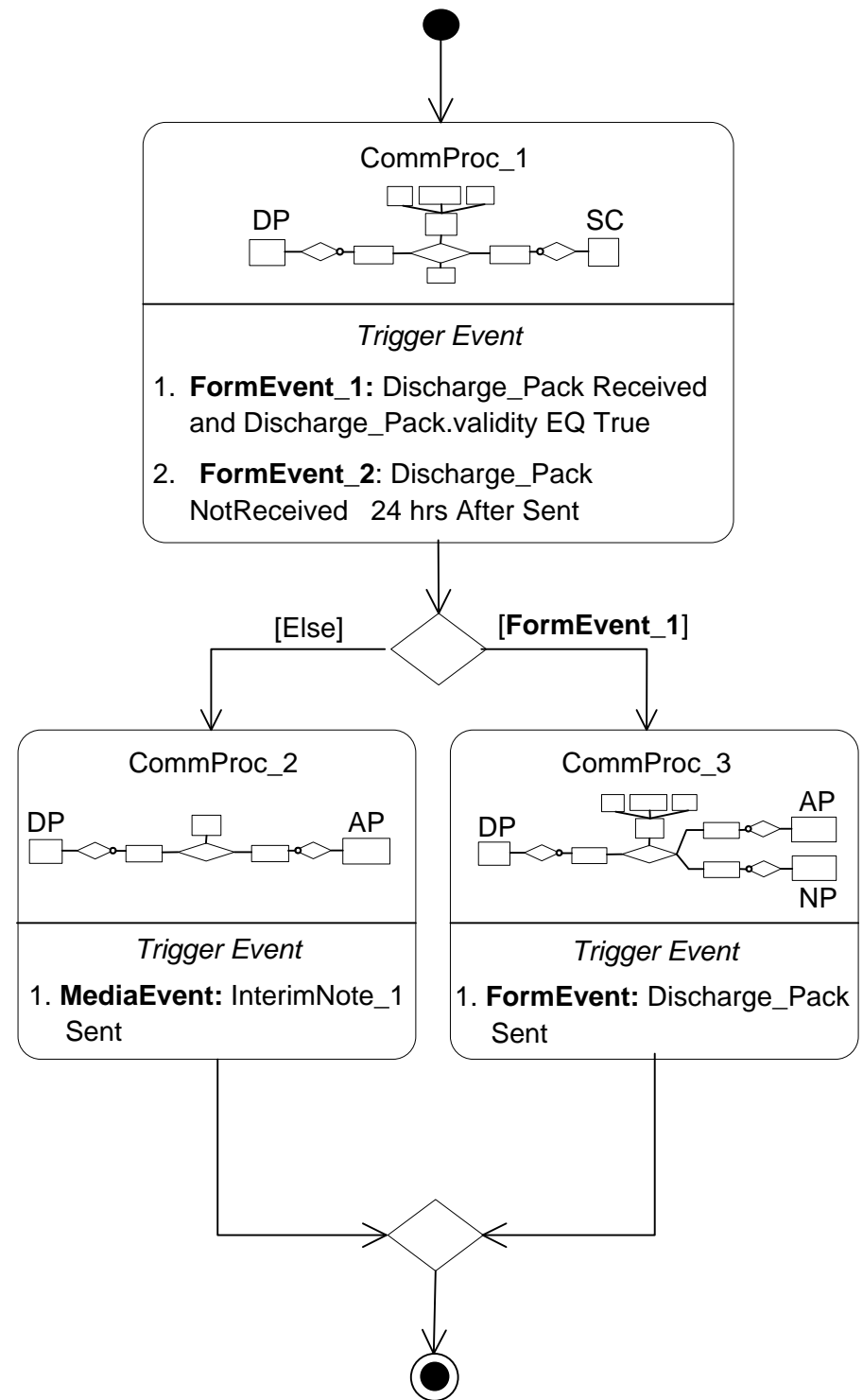


Patient Discharge Scenario:

(1) On the day of discharge, Dr. Burke (DP - Discharge Physician) establishes an audio communication with Dr. Monteiro (SC - Senior Clinician) to discuss the discharge of Baby Jane. During the conversation, Dr. Burke composes a discharge package, DisPkg_1, and sends it to Dr. Monteiro to be validated. The DisPkg_1 form consists of a RecSum-Jane.txt (text file), summary of patient's condition; x-Ray of the patient's heart, xRay-Jane.jpg (non-stream file); and a HeartEcho-Jane.mpg (video clip), an echocardiogram (echo) of the patient's heart. After DisPkg_1 is sent, Dr. Burke contacts Dr. Sanchez (PCP – Primary Care Physician) to join the conversation with Dr. Monteiro to discuss the patient's condition. During the conversation, Dr. Monteiro validates DisPkg_1 and sends it to Dr. Burke.

(2) Since the form DisPkg_1 is received within 24 hours and is validated, Dr. Burke then sends it to Nurse Smith (NP – Nurse Practitioner) and Dr. Wang (AP – Attending Physician). At the same time Dr. Burke continues his conference with Drs. Monteiro and Sanchez.

(If the form had not been validated and received within 24 hours, the workflow requires that Dr. Burke sends out an interim discharge note (InterimNote_1)).



WF-CML model representing the use case for the Patient Discharge scenario